

# Testing the association between blood type and COVID-19 infection, intubation, and death

## Authors

- **Michael Zietz**  
[0000-0003-0539-630X](tel:0000-0003-0539-630X)  
Department of Biomedical Informatics, Columbia University Irving Medical Center
- **Jason Zucker**  
[0000-0001-6987-6412](tel:0000-0001-6987-6412)  
Department of Medicine, Columbia University Irving Medical Center
- **Nicholas P. Tatonetti**  
[0000-0002-2700-2597](tel:0000-0002-2700-2597)  
Department of Biomedical Informatics, Columbia University Irving Medical Center; Department of Systems Biology, Columbia University Irving Medical Center; Department of Medicine, Columbia University Irving Medical Center; Institute for Genomic Medicine, Columbia University Irving Medical Center

† — Corresponding author: [nick.tatonetti@columbia.edu](mailto:nick.tatonetti@columbia.edu) (Nicholas P. Tatonetti)

## Abstract

The rapid global spread of the novel coronavirus SARS-CoV-2 has strained healthcare and testing resources, making the identification and prioritization of individuals most at-risk a critical challenge. Recent evidence suggests blood type may affect risk of severe COVID-19. We used observational healthcare data on 14,112 individuals tested for SARS-CoV-2 with known blood type in the New York Presbyterian (NYP) hospital system to assess the association between ABO and Rh blood types and infection, intubation, and death. We found slightly increased infection prevalence among non-O types. Risk of intubation was decreased among A and increased among AB and B types, compared with type O, while risk of death was increased for type AB and decreased for types A and B. We estimated Rh-negative blood type to have a protective effect for all three outcomes. Our results add to the growing body of evidence suggesting blood type may play a role in COVID-19.

## Background

The novel Coronavirus disease (COVID-19, caused by the SARS-CoV-2 virus) has spread rapidly across the globe and has caused over 21.1 million confirmed infections and over 761,000 deaths worldwide as of August 17, 2020 [1]. A number of risk factors for COVID-19 morbidity and mortality are known, including age, sex, smoking, hypertension, diabetes, and chronic cardiovascular and respiratory diseases [2,3].

Recent work has demonstrated an association between ABO blood types and COVID-19 risk. Using data from Wuhan and Shenzhen, Zhao et al. found a greater proportion of A and a lower

proportion of O blood types among COVID-19 patients, relative to the general populations of Wuhan and Shenzhen [4]. Similarly, using a meta-analysis of data from Italy and Spain, Ellinghaus et al. [5] found a higher risk of COVID-19 among A and a lower risk among O blood types. Conversely, however, they estimated lower odds of mechanical ventilation for all non-O types, though the estimated odds ratios were not statistically significant at the 5% level for this outcome.

The ABO blood type trait reflects polymorphisms within the *ABO* gene. This gene is associated with a number of other traits, including risk factors for COVID-19 morbidity and mortality. For example, genome-wide association studies have associated variants within *ABO* to activity of the angiotensin converting enzyme (ACE) [6], red blood cell count, hemoglobin concentration, hematocrit, [7,8,9,10], von Willebrand factor [11,12,13,14], myocardial infarction [15,16], coronary artery disease [16,17,18,19,20], ischemic stroke [12,18,21], type 2 diabetes [22,23,24], and venous thromboembolism [25,26,27,28,29,30,31,32]. A 2012 meta-analysis found that, in addition to individual variants, a non-O blood type is among the most important genetic risk factors for venous thromboembolism [33]. These conditions are also relevant for COVID-19. For example, coagulopathy is a common issue for COVID-19 patients [34,35,36,37,38,39,40], and risk of venous thromboembolism must be carefully managed [41].

The numerous associations between conditions and both blood type and COVID-19 provide reason to believe true associations may exist between blood type and morbidity and mortality due to COVID-19. In addition, previous work has identified associations between ABO blood groups and a number of different infections or disease severity following infections, including

SARS-CoV-1 [42], *P. falciparum* [43], *H. pylori* [44], Norwalk virus [45], hepatitis B virus [46], and *N. gonorrhoeae* [47].

Rh(D) phenotypes (positive and negative Rh blood types) are associated with very few diseases compared to ABO [48]. Like ABO, Rh type is important for type compatibility and immune response. For example, hemolytic disease of the newborn is a concern when Rh(D) is mismatched between mother and offspring [49]. Other studies have found evidence that Rh-positive individuals are protected against the effects of latent toxoplasmosis [50], though *Toxoplasma gondii* is a eukaryotic parasite [51], not a virus like SARS-CoV-2.

Within the United States, New York suffered among the worst outbreaks during the early phases of the pandemic. As of August 22, New York City has recorded 228,144 confirmed infections and 19,014 deaths [52]. We sought to understand the association between SARS-CoV-2 infection/COVID-19 and blood type using electronic health record (EHR) data from New York-Presbyterian/Columbia University Irving Medical Center (NYP/CUIMC) hospital in New York City, USA. We compared both ABO and Rh(D) blood types, and we investigated initial infection status and two severe COVID-19 outcomes: intubation and death. We evaluated potential confounding due to population stratification using a multivariate analysis, and we report clinically meaningful measures of effect.

## Results

We determined blood types using laboratory measurements recorded in the NYP/CUIMC EHR system. After removing likely errors, such as individuals with contradictory blood type results, we identified 14,112 adult individuals with known blood types who received at least one

SARS-CoV-2 swab test (Table 1, Supplementary Figure S1). We performed chi-squared tests of independence and found insufficient evidence to conclude that the blood group frequencies differ between SARS-CoV-2-tested and non-tested groups (Supplementary Table 1). Individuals were considered initially SARS-CoV-2 positive (COV+) if they tested positive on their first recorded test or within the following 96 hours. We evaluated associations between blood types and outcomes using three comparisons: infection prevalence among initial tests and survival analysis for intubation and death among individuals with infections confirmed by swab test. We report on clinical data as of August 1, 2020.

The unadjusted prevalence of initial infection was higher among A and B blood types and lower among AB types, compared with type O (Table 2, Figure 1). To avoid bias with respect to healthcare utilization, length of hospital stay, and potential in-patient infection, we evaluated the prevalence of infection among individuals only during the first encounters in which they were tested. In addition, to account for the considerable risk of false negative tests [55,56] and the fact that providers would repeat the test in patients with high clinical suspicion for COVID-19 [57], any positive test during the first 96 hours of an encounter was considered evidence of initial infection.

Blood type frequencies vary across ancestry groups [53], so we evaluated the confounding effect of ancestry by adjusting for race/ethnicity (proxies for ancestry). We compared infection prevalence with linear regression, using reference groups O for ABO and Rh-positive for Rh(D), and using bootstrap to compute 95% confidence intervals for each estimate [54]. With adjustment for patient race and ethnicity, prevalences among types A, AB, and B were higher

than type O. Rh(D) negative individuals had a 2.7% lower risk of initial infection after adjustment for ancestry, consistent with a lower risk before adjustment.

Next, we examined intubation and death using a survival framework to understand how blood type affects progression to disease outcomes over time. Specifically, we used the Fine-Gray model [58] to estimate cumulative incidence functions by blood type while accounting for competing risks and adjusting covariates. Death and recovery were competing events for intubation and recovery was a competing event for death. Cohort entry was defined as the time of a patient's first positive test result or the start of a hospital encounter if the first positive test occurred during the first 96 hours of the hospitalization. In accordance with CDC guidelines for returning to work [59,60], we defined a patient as having recovered only when 10 days had passed since the patient entered the cohort and only once the patient had been discharged. Patients appearing on before July 30 were considered, and outcomes beyond August 1, 2020 were censored.

Blood type A was at decreased risk of both intubation and death relative to type O, while type AB was at increased risk of both outcomes (Figure 1, Table 2). Conversely, we found that type B individuals were at higher risk of intubation but at lower risk of death, compared with type O. Individuals negative for Rh(D) were at decreased risk for both intubation and death, consistent with a lower risk of initial infection. Overall, we estimate between 0.1 and 8.2 percent absolute risk differences between blood groups, after adjusting for race and ethnicity.

## Discussion

Better understanding COVID-19 is imperative given the current pandemic's toll. We investigated whether blood type is relevant for risk of infection, intubation, and death. Overall, we found modest but consistent risk differences between blood types. After adjusting for ancestry (the relevant confounder for this analysis), estimated risk differences were larger for intubation and death outcomes than for initial infection. We estimate larger risk differences between Rh blood types than between ABO types, with Rh-negative individuals being at lower risk of all three outcomes. Type A had lower risk of intubation and death compared with types AB and O. Only type B had inconsistent effects between intubation and death—type B increased risk of intubation and decreased risk of death compared to type O. We also found consistent evidence for protective associations between Rh negative blood groups and SARS-CoV-2 infection, intubation, death. Overall, blood type appears to have a consistent effect, though the magnitudes of these effects on risk of intubation or death are modest, and our estimates have large uncertainties relative to their magnitudes. The relatively large estimated errors in our analysis also suggest modest effect sizes and that greater sample sizes or meta-analyses are needed to estimate these effects more precisely.

After adjusting for ancestry by proxies of race and ethnicity, we found that types A and B conferred greater risk of an initial positive test compared to type O, while type AB (the rarest), conferred a very small risk decrease (0.2%). These results are consistent with an association discovered for SARS-CoV-1, in which O blood groups were less common among SARS patients [42]. Our results are also mostly consistent with the results reported by Zhao et al. [4], where

non-O types appear to be at greater risk of infection, and with Ellinghaus et al. [5], where non-O appear to be at greater risk of infection but at lesser risk of mechanical ventilation, though the authors note that this decreased risk is not statistically significant at the 5% level. Unlike Ellinghaus et al., though, we estimate slightly higher risk for types B and AB relative to O for intubation.

Our results are based on data collected as part of hospital care during the early course of the pandemic, where outpatient testing was severely limited due to testing capacity and supply limitations. As such, our data are highly enriched for severely-ill patients, and the absolute risk values we report are not generalizable to all SARS-CoV-2-infected individuals. A considerable fraction of infections are mild or asymptomatic [61,62,63,64], while our data represent predominantly the most severe cases. Selection bias is a fundamental limitation of our study, so all our effect estimates are conditional on presentation to the hospital. Nonetheless, we minimized additional selection bias by making cohort criteria for cases and controls differ only with respect to the outcome of interest. Moreover, we found concordance between SARS-CoV-2-tested individuals and the general population at NYP/CUIMC in terms of blood type (Supplementary table 1). Consequently, our results are not affected by selection bias with respect to blood type, unlike some other blood type case/control study designs—particularly those using blood donors as controls, where enrichment of type O can be expected [5].

False negatives and time delay between test administrations and the return of their results both introduce noise to this analysis. We attempted to account for these biases by setting cohort entry at the time of first contact with the hospital when the patient tested positive less than 96 hours thereafter. This definition is imperfect, as 96 hours is sufficient for an individual infected shortly



after admission to test positive (albeit with probability roughly 0.33) [65], but it is necessary to allow sufficient adjustment for the considerable time delay and retesting following false negatives. Another source of noise is the fact that not all intubations and deaths following a confirmed infection are related to COVID-19 (e.g. intubation during unrelated surgery). We defined recovery in an attempt to minimize this issue, though we recognize our definition is imperfect. Patients may be discharged prematurely and later return following onset of severe symptoms. Moreover, our 10 day cutoff for recovery is based on CDC guidelines for returning to work [59,60], which may be refined as additional evidence becomes available. Further work is needed to refine the definition of recovery and to determine which outcomes may be causally linked to COVID-19.

The *ABO* gene is highly polymorphic [66], and blood types have considerably different distributions across ancestry groups [53]. Like ABO, Rh groups are not distributed equally across race/ethnicity groups, with enrichment of Rh-negative among white and non-Hispanic individuals (Table 1). In addition, negative Rh blood groups are less common, representing only 9% of individuals in our data. While genetic data were not available for the patients included in our study, we used self-reported race and ethnicity as imperfect proxies for genetic ancestry. Adjusting for these covariates had a noticeable effect on our comparison of infection prevalence, but did not have an equally relevant effect on intubation or death (Figure 1, Table 2). This suggests that blood type may have a lesser, more confounded effect on infection prevalence than on intubation or death following confirmed infection. Nonetheless, race and ethnicity cannot fully capture ancestry, so the associations between blood types and COVID-19 we report may still be confounded by ancestry, even after adjustment. Further work is needed to better

understand any potential residual confounding due to ancestry, not captured by race and ethnicity.

## **Conclusion**

In this study we found evidence for associations between ABO and Rh blood groups and COVID-19. Using data from NYP/CUIMC, we found moderately increased infection prevalence among non-O blood types and among Rh-positive individuals. Intubation risk was increased among AB and B types, and decreased among A and Rh-negative types. Risk of death was slightly increased among type AB individuals and was decreased among types A, B, and Rh-negative types. All estimates were adjusted for patient ancestry using self-reported race and ethnicity. Our results add further evidence to the previously discovered associations between blood types and COVID-19.

## **Acknowledgements**

We would like to thank Ben May and Vijendra Ramlall for assistance with data collection and periodic updates to the patient data. We would also like to thank Nicholas Giangreco, Undina Gisladdottir, and Dr. Phyllis Thangaraj for helpful discussions regarding risk factor definitions. MZ is funded by NIH T15 LM007079, and NPT is funded by R35GM131905.

## **Author contributions**

MZ and NPT conceived and designed the study. MZ carried out the statistical analysis with advice from NPT. JZ and MZ created the cohort entry and exit criteria. MZ and NPT wrote, revised, and approved the final version of the manuscript.

## **Competing interests**

The authors have no competing interests to disclose.

## **Methods**

We identified the cohort for this study by filtering the NYP/CUIMC data warehouse for patients with a recorded SARS-CoV-2 test and those having a recorded blood type. Next, we removed any individual with multiple, contradictory blood type measurements, reflecting likely errors in the data. Finally, we excluded individuals below age 18 from our analysis.

Blood group was determined using laboratory measurements coded using descendant concepts of [LOINC LP36683-8 \(ABO and Rh group\)](#). Individuals with contradictory measurements were excluded. Intubation was assessed using completed procedures having the procedure description, “Intubation.” We grouped race into five categories and ethnicity into two. Specifically, we considered only Asian, Black/African-American, and White, categorizing other listed races (all of which were small minorities) as ‘Other’, and missing or declined race as ‘Missing’. Ethnicity was grouped as either Hispanic or non-Hispanic.

We sought to estimate total effects of blood type on COVID-19 outcomes. Using a graphical model (Supplementary Figure S2), we identified ancestry as the only confounding variable for an estimate of total effect, since blood type is genetic and varies across ancestry groups. As genetic data were not available, we used self-reported race and ethnicity as proxies for ancestry. We were unable to identify a method to alleviate selection bias in our data, so the effects we report are conditional on presence at NYP/CUIMC.

We considered three outcomes: initial infection, intubation, and death. Our evaluation of initial infection sought to assess the infection prevalence differences among individuals presenting to the hospital, not those potentially infected at the hospital or long after their first test. Due to the high risk for false negatives [55,56], we considered any positive test less than 96 hours after the start of an encounter as evidence of initial infection. Initial infection risk differences between blood types were assessed using linear regression, and race/ethnicity were adjusted by including them as covariates. We used Austin's bootstrap method to compute 95% confidence intervals for all risk estimates [54], using 1000 bootstrap iterations.

We assessed intubation and death as severe outcomes of COVID-19, and evaluated blood type effects using survival analysis. Individuals entered the at-risk cohort either at the time of their first positive test result, or at the time of first contact with the hospital when the first positive test occurred within 96 hours of the start of a hospital encounter. Patients with Do-Not-Intubate orders were excluded from consideration for the intubation outcome. We defined a patient as recovered only after being discharged from the hospital and only once 10 days have passed since cohort entry. Death and recovery are competing risks for intubation, and recovery is a competing risk for death. Finally, outcomes beyond August 1 were censored, as this was the last date for

which we have data available. Intubation and death were assessed using Fine-Gray models, which can estimate cumulative incidences. As before, race and ethnicity were adjusted by including them as covariates, and confidence intervals were computed with 1000 bootstrap iterations.

This study is approved by the IRB (#AAAL0601). We conducted our analyses using the R language, using the `cmprsk` package [67] implementation of the Fine-Gray model. The manuscript was written [openly on GitHub](#) using Manubot [68].

## **Data availability**

While our data from NYP/CUIMC are protected by HIPAA and cannot be released, we have made all code used for our analysis available at [https://github.com/zietzm/abo\\_covid\\_analysis](https://github.com/zietzm/abo_covid_analysis).

## **Code availability**

We have made all code used for our analysis available at [https://github.com/zietzm/abo\\_covid\\_analysis](https://github.com/zietzm/abo_covid_analysis).

## Tables

**Table 1: Summary demographics for SARS-CoV-2-tested individuals at NYP/CUIMC, stratified by blood type.** *N* is the number of individuals having the given blood type who had at least one recorded test for SARS-CoV-2. Age is reported as the median and interquartile range (25-75). Percents are reported relative to individuals having the blood type, except the *N* row, where percents are by blood group type (ABO or Rh) and are relative to all individuals in the study.

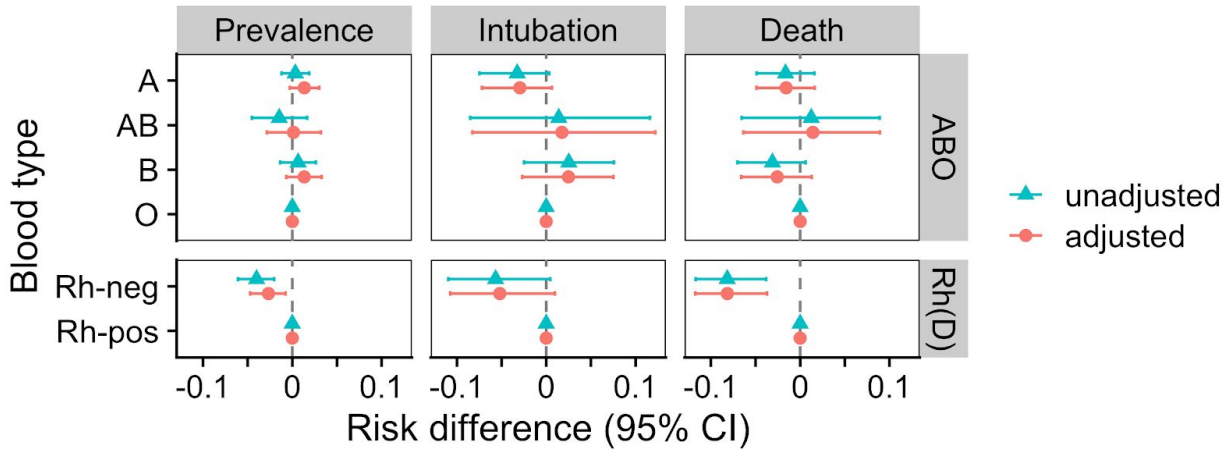
	<b>A</b>	<b>AB</b>	<b>B</b>	<b>O</b>	<b>Rh-neg</b>	<b>Rh-pos</b>
N	4298 (32.9)	559 (4.3)	2033 (15.6)	6161 (47.2)	1195 (9.2)	11856 (90.8)
Age (IQR)	58 (37 to 72)	57 (37 to 71)	57 (37 to 72)	55 (36 to 71)	56 (37 to 70)	56 (37 to 71)
Male (%)	1676 (39.0)	231 (41.3)	778 (38.3)	2339 (38.0)	430 (36.0)	4594 (38.7)
Hispanic (%)	1572 (36.6)	173 (30.9)	666 (32.8)	2583 (41.9)	389 (32.6)	4605 (38.8)
<b>Race</b>						
Asian (%)	71 (1.7)	21 (3.8)	89 (4.4)	123 (2.0)	16 (1.3)	288 (2.4)
Black (%)	629 (14.6)	95 (17.0)	493 (24.2)	1179 (19.1)	151 (12.6)	2245 (18.9)
Missing (%)	728 (16.9)	79 (14.1)	370 (18.2)	1093 (17.7)	192 (16.1)	2078 (17.5)
Other (%)	1085 (25.2)	132 (23.6)	464 (22.8)	1715 (27.8)	263 (22.0)	3133 (26.4)
White (%)	1785 (41.5)	232 (41.5)	617 (30.3)	2051 (33.3)	573 (47.9)	4112 (34.7)
<b>Outcomes</b>						
Initially COV+ (%)	754 (17.5)	88 (15.7)	363 (17.9)	1060 (17.2)	164 (13.7)	2101 (17.7)
COV+ (%)	786 (18.3)	94 (16.8)	392 (19.3)	1122 (18.2)	175 (14.6)	2219 (18.7)
COV+/Intubated (%)	111 (2.6)	17 (3.0)	78 (3.8)	193 (3.1)	24 (2.0)	375 (3.2)
COV+/Died (%)	104 (2.4)	15 (2.7)	46 (2.3)	166 (2.7)	11 (0.9)	320 (2.7)

**Table 2: Effect size estimates for blood types with and without correction for race and ethnicity. Risks computed using linear regression (for prevalence) or the cumulative incidence from Fine-Gray models (for intubation and death). Risk differences and ratios computed relative to O ABO blood type and positive Rh(D) type.**

Outcome	Blood type	Unadjusted			Race/ethnicity adjusted		
		Risk	Risk difference	Risk ratio	Risk	Risk difference	Risk ratio
Prevalence	A	17.5 (16.3 to 18.8)	0.3 (-1.2 to 1.9)	1.02 (0.93 to 1.12)	18.0 (16.8 to 19.2)	1.3 (-0.3 to 3.0)	1.08 (0.98 to 1.19)
	AB	15.7 (12.8 to 18.7)	-1.5 (-4.5 to 1.7)	0.91 (0.74 to 1.10)	16.8 (13.9 to 19.8)	0.1 (-2.8 to 3.2)	1.01 (0.83 to 1.20)
	B	17.9 (16.1 to 19.5)	0.7 (-1.4 to 2.6)	1.04 (0.92 to 1.16)	18.0 (16.3 to 19.7)	1.3 (-0.7 to 3.3)	1.08 (0.96 to 1.20)
	O	17.2 (16.2 to 18.1)	—	—	16.7 (15.7 to 17.6)	—	—
	Rh-pos	17.7 (17.0 to 18.4)	—	—	17.6 (16.9 to 18.3)	—	—
	Rh-neg	13.7 (11.8 to 15.5)	-4.0 (-6.1 to -2.0)	0.77 (0.66 to 0.88)	14.9 (13.0 to 16.8)	-2.7 (-4.7 to -0.8)	0.85 (0.73 to 0.96)
Intubation	A	17.2 (14.2 to 20.1)	-3.2 (-7.5 to 0.3)	0.84 (0.66 to 1.02)	17.3 (14.3 to 20.4)	-2.9 (-7.2 to 0.6)	0.85 (0.68 to 1.03)
	AB	21.8 (12.3 to 31.7)	1.4 (-8.5 to 11.6)	1.07 (0.59 to 1.57)	22.1 (12.8 to 32.1)	1.8 (-8.3 to 12.2)	1.09 (0.60 to 1.59)
	B	22.9 (18.6 to 27.6)	2.5 (-2.5 to 7.6)	1.12 (0.89 to 1.40)	22.8 (18.6 to 27.5)	2.5 (-2.7 to 7.5)	1.12 (0.88 to 1.40)
	O	20.4 (17.8 to 23.4)	—	—	20.3 (17.7 to 23.3)	—	—
	Rh-pos	20.3 (18.4 to 22.1)	—	—	20.2 (18.4 to 22.1)	—	—
	Rh-neg	14.6 (9.7 to 20.7)	-5.7 (-11.0 to 0.5)	0.72 (0.47 to 1.02)	15.0 (9.9 to 21.0)	-5.2 (-10.7 to 1.0)	0.74 (0.48 to 1.05)
Death	A	13.3 (11.0 to 15.7)	-1.6 (-4.9 to 1.6)	0.89 (0.71 to 1.11)	13.2 (10.9 to 15.6)	-1.6 (-4.9 to 1.6)	0.89 (0.71 to 1.12)
	AB	16.1 (8.5 to 23.8)	1.2 (-6.6 to 8.9)	1.08 (0.58 to 1.62)	16.2 (8.7 to 23.5)	1.4 (-6.4 to 8.9)	1.10 (0.59 to 1.64)
	B	11.8 (8.6 to 15.0)	-3.1 (-7.0 to 0.6)	0.79 (0.56 to 1.05)	12.2 (9.0 to 15.5)	-2.6 (-6.6 to 1.3)	0.83 (0.58 to 1.09)
	O	14.9 (12.9 to 17.1)	—	—	14.8 (12.7 to 16.9)	—	—
	Rh-pos	14.5 (13.0 to 16.0)	—	—	14.5 (13.0 to 16.0)	—	—
	Rh-neg	6.3 (3.0 to 10.1)	-8.2 (-11.7 to -3.8)	0.44 (0.21 to 0.72)	6.4 (3.0 to 10.3)	-8.2 (-11.7 to -3.7)	0.44 (0.21 to 0.74)

## Figures

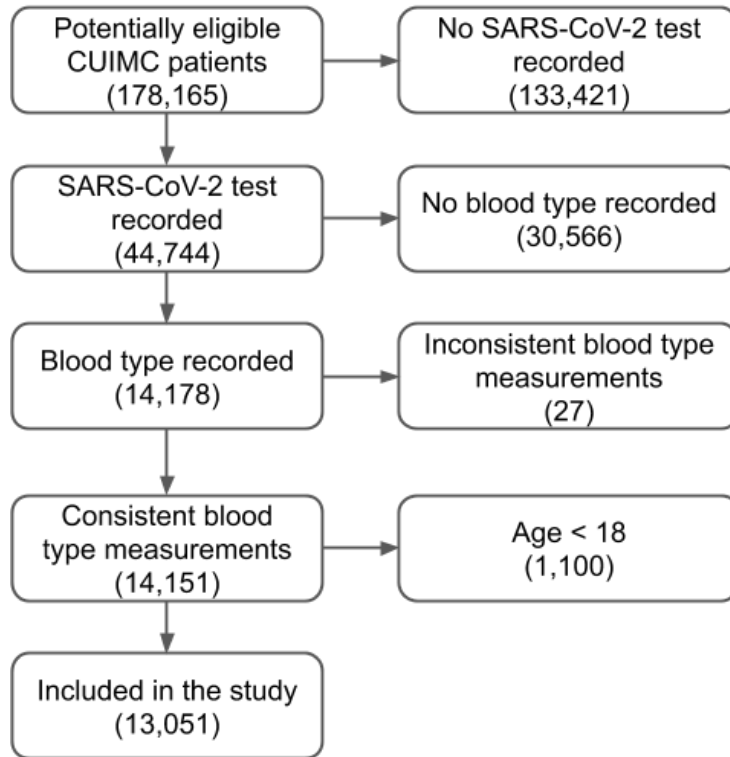
**Figure 1: Estimated risk differences for blood types during the period from March 10 to August 1, 2020.** Values represent risk differences for each blood type relative to the reference groups: O for ABO and positive for Rh(D). Prevalence risk differences were computed using linear regression, while intubation and death were computed using the Fine-Gray model [58]. Differences and 95% confidence intervals (CI) computed using Austin's method, including bootstrap [54]. Adjusted models include race and ethnicity as covariates.



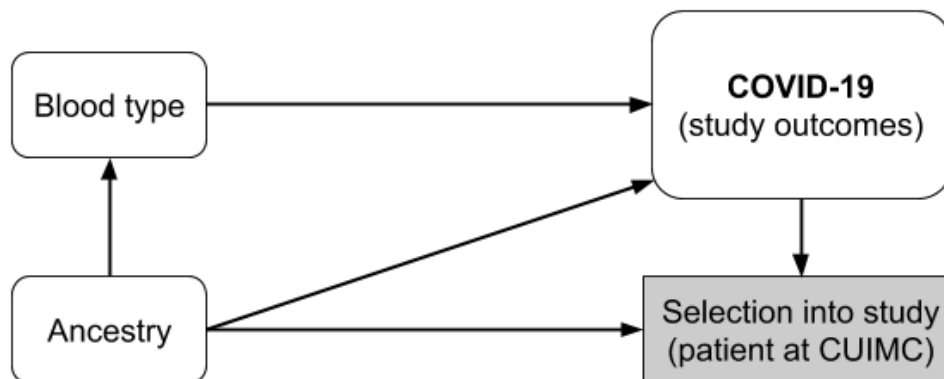


## Supplemental information

*Supplementary Figure 1: Flow diagram of inclusion and exclusion criteria for the cohort used. Numbers indicate the number of patients in each group. Groups on the right were excluded.*



*Supplementary Figure 2: Graphical model of the system under investigation. We sought to estimate the total effects of blood type on the COVID-19 outcomes under investigation. Confounding can be controlled by adjusting for ancestry. Selection bias cannot be controlled fully, and as a result, our estimates are conditional on presentation to the hospital during the COVID-19 pandemic.*



*Supplementary Table 1: Chi-squared tests to evaluate whether the dependence between blood type and having received a test for SARS-CoV-2. ABO had three degrees of freedom, while Rh(D) had one degree of freedom.*

Blood group	SARS-CoV-2 tested	non-SARS-CoV-2-tested	Chi-squared	p-value
ABO	A: 4298 (32.9%), AB: 559 (4.3%), B: 2033 (15.6%), O: 6161 (47.2%)	A: 34156 (32.7%), AB: 4405 (4.2%), B: 15590 (14.9%), O: 50305 (48.2%)	5.79	0.122
Rh(D)	neg: 1195 (9.2%), pos: 11856 (90.8%)	neg: 9644 (9.2%), pos: 94812 (90.8%)	0.0716	0.789

## References

### 1. Coronavirus disease 2019 (COVID-19) Weekly Epidemiological Update 1

World Health Organization

*WHO Coronavirus disease 2019 Weekly Epidemiological Updates* (2020-08-17)

<https://www.who.int/docs/default-source/coronaviruse/situation-reports/20200817-weekly-epi-update-1.pdf>

### 2. Clinical course and risk factors for mortality of adult inpatients with COVID-19 in Wuhan, China: a retrospective cohort study

Fei Zhou, Ting Yu, Ronghui Du, Guohui Fan, Ying Liu, Zhibo Liu, Jie Xiang, Yeming Wang, Bin Song, Xiaoying Gu, ... Bin Cao

*The Lancet* (2020-03) <https://doi.org/ggnxb3>

DOI: [10.1016/s0140-6736\(20\)30566-3](https://doi.org/10.1016/s0140-6736(20)30566-3) · PMID: [32171076](https://pubmed.ncbi.nlm.nih.gov/32171076/) · PMCID: [PMC7270627](https://pubmed.ncbi.nlm.nih.gov/PMC7270627/)

### 3. Risk factors of critical & mortal COVID-19 cases: A systematic literature review and meta-analysis

Zhaohai Zheng, Fang Peng, Buyun Xu, Jingjing Zhao, Huahua Liu, Jiahao Peng, Qingsong Li, Chongfu Jiang, Yan Zhou, Shuqing Liu, ... Weiliang Tang

*Journal of Infection* (2020-08) <https://doi.org/ggv36z>

DOI: [10.1016/j.jinf.2020.04.021](https://doi.org/10.1016/j.jinf.2020.04.021) · PMID: [32335169](https://pubmed.ncbi.nlm.nih.gov/32335169/) · PMCID: [PMC7177098](https://pubmed.ncbi.nlm.nih.gov/PMC7177098/)

### 4. Relationship between the ABO Blood Group and the COVID-19 Susceptibility

Jiao Zhao, Yan Yang, Hanping Huang, Dong Li, Dongfeng Gu, Xiangfeng Lu, Zheng Zhang, Lei Liu, Ting Liu, Yukun Liu, ... Peng George Wang

*medRxiv* (2020-03-27) <https://doi.org/ggpn3d>

DOI: [10.1101/2020.03.11.20031096](https://doi.org/10.1101/2020.03.11.20031096)

### 5. Genomewide Association Study of Severe Covid-19 with Respiratory Failure

David Ellinghaus, Frauke Degenhardt, Luis Bujanda, Maria Buti, Agustín Albillos, Pietro

Invernizzi, Javier Fernández, Daniele Prati, Guido Baselli, Rosanna Asselta, ... Tom H. Karlsen

*New England Journal of Medicine* (2020-06-17) <https://doi.org/gg2pqx>

DOI: [10.1056/nejmoa2020283](https://doi.org/10.1056/nejmoa2020283) · PMID: [32558485](https://pubmed.ncbi.nlm.nih.gov/32558485/) · PMCID: [PMC7315890](https://pubmed.ncbi.nlm.nih.gov/PMC7315890/)

### 6. A genome-wide association study identifies new loci for ACE activity: potential implications for response to ACE inhibitor

C-M Chung, R-Y Wang, J-W Chen, CSJ Fann, H-B Leu, H-Y Ho, C-T Ting, T-H Lin, S-H Sheu,

W-C Tsai, ... W-H Pan

*The Pharmacogenomics Journal* (2010-01-12) <https://doi.org/ffzgpv>

DOI: [10.1038/tpj.2009.70](https://doi.org/10.1038/tpj.2009.70) · PMID: [20066004](https://pubmed.ncbi.nlm.nih.gov/20066004/)

### **7. Genome-wide association study of hematological and biochemical traits in a Japanese population**

Yoichiro Kamatani, Koichi Matsuda, Yukinori Okada, Michiaki Kubo, Naoya Hosono, Yataro Daigo, Yusuke Nakamura, Naoyuki Kamatani

*Nature Genetics* (2010-02-07) <https://doi.org/d39wm9>

DOI: [10.1038/ng.531](https://doi.org/10.1038/ng.531) · PMID: [20139978](https://pubmed.ncbi.nlm.nih.gov/20139978/)

### **8. The Allelic Landscape of Human Blood Cell Trait Variation and Links to Common Complex Disease**

William J. Astle, Heather Elding, Tao Jiang, Dave Allen, Dace Ruklisa, Alice L. Mann, Daniel Mead, Heleen Bouman, Fernando Riveros-Mckay, Myrto A. Kostadima, ... Nicole Soranzo

*Cell* (2016-11) <https://doi.org/f9dvcv>

DOI: [10.1016/j.cell.2016.10.042](https://doi.org/10.1016/j.cell.2016.10.042) · PMID: [27863252](https://pubmed.ncbi.nlm.nih.gov/27863252/) · PMCID: [PMC5300907](https://pubmed.ncbi.nlm.nih.gov/PMC5300907/)

### **9. Genome-wide Trans-ethnic Meta-analysis Identifies Seven Genetic Loci Influencing Erythrocyte Traits and a Role for RBPMS in Erythropoiesis**

Frank J. A. van Rooij, Rehan Qayyum, Albert V. Smith, Yi Zhou, Stella Trompet, Toshiko Tanaka, Margaux F. Keller, Li-Ching Chang, Helena Schmidt, Min-Lee Yang, ... Santhi K. Ganesh

*The American Journal of Human Genetics* (2017-01) <https://doi.org/f9knrj>

DOI: [10.1016/j.ajhg.2016.11.016](https://doi.org/10.1016/j.ajhg.2016.11.016) · PMID: [28017375](https://pubmed.ncbi.nlm.nih.gov/28017375/) · PMCID: [PMC5223059](https://pubmed.ncbi.nlm.nih.gov/PMC5223059/)

### **10. Genetic analysis of quantitative traits in the Japanese population links cell types to complex human diseases**

Masahiro Kanai, Masato Akiyama, Atsushi Takahashi, Nana Matoba, Yukihide Momozawa, Masashi Ikeda, Nakao Iwata, Shiro Ikegawa, Makoto Hirata, Koichi Matsuda, ... Yoichiro Kamatani

*Nature Genetics* (2018-02-05) <https://doi.org/gc88bp>

DOI: [10.1038/s41588-018-0047-6](https://doi.org/10.1038/s41588-018-0047-6) · PMID: [29403010](https://pubmed.ncbi.nlm.nih.gov/29403010/)

### **11. Novel Associations of Multiple Genetic Loci With Plasma Levels of Factor VII, Factor VIII, and von Willebrand Factor**

Nicholas L. Smith, Ming-Huei Chen, Abbas Dehghan, David P. Strachan, Saonli Basu, Nicole Soranzo, Caroline Hayward, Igor Rudan, Maria Sabater-Lleal, Joshua C. Bis, ... Wellcome Trust Case Control Consortium;

*Circulation* (2010-03-30) <https://doi.org/d37tns>

DOI: [10.1161/circulationaha.109.869156](https://doi.org/10.1161/circulationaha.109.869156) · PMID: [20231535](https://pubmed.ncbi.nlm.nih.gov/20231535/) · PMCID: [PMC2861278](https://pubmed.ncbi.nlm.nih.gov/PMC2861278/)

### **12. Ischemic stroke is associated with the *ABO* locus: The EuroCLOT study**

Frances M. K. Williams, Angela M. Carter, Pirro G. Hysi, Gabriela Surdulescu, Dylan Hodgkiss, Nicole Soranzo, Matthew Traylor, Steve Bevan, Martin Dichgans, Peter M. W. Rothwell, ... on Behalf of the EuroCLOT Investigators the Wellcome Trust Case Control Consortium 2 MOnica Risk, Genetics, Archiving and Monograph MetaStroke and the International Stroke Genetics

Consortium

*Annals of Neurology* (2013-01) <https://doi.org/f22kds>

DOI: [10.1002/ana.23838](https://doi.org/10.1002/ana.23838) · PMID: [23381943](https://pubmed.ncbi.nlm.nih.gov/23381943/) · PMCID: [PMC3582024](https://pubmed.ncbi.nlm.nih.gov/PMC3582024/)

**13. Genome-wide association studies identify genetic loci for low von Willebrand factor levels**

Janine van Loon, Abbas Dehghan, Tang Weihong, Stella Trompet, Wendy L McArdle, Folkert FW Asselbergs, Ming-Huei Chen, Lorna M Lopez, Jennifer E Huffman, Frank WG Leebeek, ... Christopher O'Donnell

*European Journal of Human Genetics* (2015-10-21) <https://doi.org/gg8q93>

DOI: [10.1038/ejhg.2015.222](https://doi.org/10.1038/ejhg.2015.222) · PMID: [26486471](https://pubmed.ncbi.nlm.nih.gov/26486471/) · PMCID: [PMC5070882](https://pubmed.ncbi.nlm.nih.gov/PMC5070882/)

**14. Genome-Wide Association Transethnic Meta-Analyses Identifies Novel Associations Regulating Coagulation Factor VIII and von Willebrand Factor Plasma Levels**

Maria Sabater-Lleal, Jennifer E. Huffman, Paul S. de Vries, Jonathan Marten, Michael A. Mastrangelo, Ci Song, Nathan Pankratz, Cavin K. Ward-Caviness, Lisa R. Yanek, Stella Trompet, ... INVENT Consortium; MEGASTROKE Consortium of the International Stroke Genetics Consortium (ISGC)

*Circulation* (2019-01-29) <https://doi.org/gg8q99>

DOI: [10.1161/circulationaha.118.034532](https://doi.org/10.1161/circulationaha.118.034532) · PMID: [30586737](https://pubmed.ncbi.nlm.nih.gov/30586737/) · PMCID: [PMC6438386](https://pubmed.ncbi.nlm.nih.gov/PMC6438386/)

**15. Identification of ADAMTS7 as a novel locus for coronary atherosclerosis and association of ABO with myocardial infarction in the presence of coronary atherosclerosis: two genome-wide association studies**

Muredach P Reilly, Mingyao Li, Jing He, Jane F Ferguson, Ioannis M Stylianou, Nehal N Mehta, Mary Susan Burnett, Joseph M Devaney, Christopher W Knouff, John R Thompson, ... Daniel J Rader

*The Lancet* (2011-01) <https://doi.org/fms4dn>

DOI: [10.1016/s0140-6736\(10\)61996-4](https://doi.org/10.1016/s0140-6736(10)61996-4) · PMID: [21239051](https://pubmed.ncbi.nlm.nih.gov/21239051/) · PMCID: [PMC3297116](https://pubmed.ncbi.nlm.nih.gov/PMC3297116/)

**16. A comprehensive 1000 Genomes–based genome-wide association meta-analysis of coronary artery disease**

the CARDIoGRAMplusC4D Consortium

*Nature Genetics* (2015-09-07) <https://doi.org/f3m2c6>

DOI: [10.1038/ng.3396](https://doi.org/10.1038/ng.3396) · PMID: [26343387](https://pubmed.ncbi.nlm.nih.gov/26343387/) · PMCID: [PMC4589895](https://pubmed.ncbi.nlm.nih.gov/PMC4589895/)

**17. Large-scale association analysis identifies 13 new susceptibility loci for coronary artery disease**

Heribert Schunkert, Inke R König, Sekar Kathiresan, Muredach P Reilly, Themistocles L Assimes, Hilma Holm, Michael Preuss, Alexandre FR Stewart, Maja Barbalic, Christian Gieger, ... the CARDIoGRAM Consortium

*Nature Genetics* (2011-03-06) <https://doi.org/d5z4rh>

DOI: [10.1038/ng.784](https://doi.org/10.1038/ng.784) · PMID: [21378990](https://pubmed.ncbi.nlm.nih.gov/21378990/) · PMCID: [PMC3119261](https://pubmed.ncbi.nlm.nih.gov/PMC3119261/)

**18. Shared Genetic Susceptibility to Ischemic Stroke and Coronary Artery Disease**

Martin Dichgans, Rainer Malik, Inke R. König, Jonathan Rosand, Robert Clarke, Solveig Gretarsdottir, Gudmar Thorleifsson, Braxton D. Mitchell, Themistocles L. Assimes, Christopher

Levi, ... Collaborators/second tier of authors:

*Stroke* (2014-01) <https://doi.org/f5m2b4>

DOI: [10.1161/strokeaha.113.002707](https://doi.org/10.1161/strokeaha.113.002707) · PMID: [24262325](https://pubmed.ncbi.nlm.nih.gov/24262325/) · PMCID: [PMC4112102](https://pubmed.ncbi.nlm.nih.gov/PMC4112102/)

**19. Association analyses based on false discovery rate implicate new loci for coronary artery disease**

Christopher P Nelson, Anuj Goel, Adam S Butterworth, Stavroula Kanoni, Tom R Webb, Eirini Marouli, Lingyao Zeng, Ioanna Ntalla, Florence Y Lai, Jemma C Hopewell, ... Panos Deloukas  
*Nature Genetics* (2017-07-17) <https://doi.org/gbnnwd>

DOI: [10.1038/ng.3913](https://doi.org/10.1038/ng.3913) · PMID: [28714975](https://pubmed.ncbi.nlm.nih.gov/28714975/)

**20. Identification of 64 Novel Genetic Loci Provides an Expanded View on the Genetic Architecture of Coronary Artery Disease**

Pim van der Harst, Niek Verweij

*Circulation Research* (2018-02-02) <https://doi.org/gcw7qj>

DOI: [10.1161/circresaha.117.312086](https://doi.org/10.1161/circresaha.117.312086) · PMID: [29212778](https://pubmed.ncbi.nlm.nih.gov/29212778/) · PMCID: [PMC5805277](https://pubmed.ncbi.nlm.nih.gov/PMC5805277/)

**21. Multiancestry genome-wide association study of 520,000 subjects identifies 32 loci associated with stroke and stroke subtypes**

Rainer Malik, Ganesh Chauhan, Matthew Traylor, Muralidharan Sargurupremraj, Yukinori Okada, Aniket Mishra, Loes Rutten-Jacobs, Anne-Katrin Giese, Sander W. van der Laan, Solveig Gretarsdottir, ... MEGASTROKE Consortium

*Nature Genetics* (2018-03-12) <https://doi.org/gc8wmv>

DOI: [10.1038/s41588-018-0058-3](https://doi.org/10.1038/s41588-018-0058-3) · PMID: [29531354](https://pubmed.ncbi.nlm.nih.gov/29531354/) · PMCID: [PMC5968830](https://pubmed.ncbi.nlm.nih.gov/PMC5968830/)

**22. An Expanded Genome-Wide Association Study of Type 2 Diabetes in Europeans**

Robert A. Scott, Laura J. Scott, Reedik Mägi, Letizia Marullo, Kyle J. Gaulton, Marika Kaakinen, Natalia Pervjakova, Tune H. Pers, Andrew D. Johnson, John D. Eicher, ... Inga Prokopenko

*Diabetes* (2017-11) <https://doi.org/gbvxtg>

DOI: [10.2337/db16-1253](https://doi.org/10.2337/db16-1253) · PMID: [28566273](https://pubmed.ncbi.nlm.nih.gov/28566273/) · PMCID: [PMC5652602](https://pubmed.ncbi.nlm.nih.gov/PMC5652602/)

**23. Genome-wide association analyses identify 143 risk variants and putative regulatory mechanisms for type 2 diabetes**

Angli Xue, Yang Wu, Zhihong Zhu, Futao Zhang, Kathryn E. Kemper, Zhili Zheng, Loic Yengo, Luke R. Lloyd-Jones, Julia Sidorenko, Yeda Wu, ... eQTLGen Consortium

*Nature Communications* (2018-07-27) <https://doi.org/gdvqcz>

DOI: [10.1038/s41467-018-04951-w](https://doi.org/10.1038/s41467-018-04951-w) · PMID: [30054458](https://pubmed.ncbi.nlm.nih.gov/30054458/) · PMCID: [PMC6063971](https://pubmed.ncbi.nlm.nih.gov/PMC6063971/)

**24. Fine-mapping type 2 diabetes loci to single-variant resolution using high-density imputation and islet-specific epigenome maps**

Anubha Mahajan, Daniel Taliun, Matthias Thurner, Neil R. Robertson, Jason M. Torres, N. William Rayner, Anthony J. Payne, Valgerdur Steinthorsdottir, Robert A. Scott, Niels Grarup, ... Mark I. McCarthy

*Nature Genetics* (2018-10-08) <https://doi.org/gfb68d>

DOI: [10.1038/s41588-018-0241-6](https://doi.org/10.1038/s41588-018-0241-6) · PMID: [30297969](https://pubmed.ncbi.nlm.nih.gov/30297969/) · PMCID: [PMC6287706](https://pubmed.ncbi.nlm.nih.gov/PMC6287706/)

**25. Common susceptibility alleles are unlikely to contribute as strongly as the FV and ABO loci to VTE risk: results from a GWAS approach**

David-Alexandre Trégouët, Simon Heath, Noémie Saut, Christine Biron-Andreani, Jean-François Schved, Gilles Pernod, Pilar Galan, Ludovic Drouet, Diana Zelenika, Irène Juhan-Vague, ... Pierre-Emmanuel Morange  
*Blood* (2009-05-21) <https://doi.org/fsvjbh>  
DOI: [10.1182/blood-2008-11-190389](https://doi.org/10.1182/blood-2008-11-190389) · PMID: [19278955](https://pubmed.ncbi.nlm.nih.gov/19278955/)

**26. Genetics of Venous Thrombosis: Insights from a New Genome Wide Association Study**

Marine Germain, Noémie Saut, Nicolas Greliche, Christian Dina, Jean-Charles Lambert, Claire Perret, William Cohen, Tiphaine Oudot-Mellakh, Guillemette Antoni, Marie-Christine Alessi, ... Pierre-Emmanuel Morange  
*PLoS ONE* (2011-09-27) <https://doi.org/btdd2f>  
DOI: [10.1371/journal.pone.0025581](https://doi.org/10.1371/journal.pone.0025581) · PMID: [21980494](https://pubmed.ncbi.nlm.nih.gov/21980494/) · PMCID: [PMC3181335](https://pubmed.ncbi.nlm.nih.gov/PMC3181335/)

**27. A genome-wide association study of venous thromboembolism identifies risk variants in chromosomes 1q24.2 and 9q**

J. A. HEIT, S. M. ARMASU, Y. W. ASMANN, J. M. CUNNINGHAM, M. E. MATSUMOTO, T. M. PETTERSON, M. DE ANDRADE  
*Journal of Thrombosis and Haemostasis* (2012-08) <https://doi.org/f366q9>  
DOI: [10.1111/j.1538-7836.2012.04810.x](https://doi.org/10.1111/j.1538-7836.2012.04810.x) · PMID: [22672568](https://pubmed.ncbi.nlm.nih.gov/22672568/) · PMCID: [PMC3419811](https://pubmed.ncbi.nlm.nih.gov/PMC3419811/)

**28. A Genome-Wide Association Study for Venous Thromboembolism: The Extended Cohorts for Heart and Aging Research in Genomic Epidemiology (CHARGE) Consortium**

Weihong Tang, Martina Teichert, Daniel I. Chasman, John A. Heit, Pierre-Emmanuel Morange, Guo Li, Nathan Pankratz, Frank W. Leebeek, Guillaume Paré, Mariza de Andrade, ... Nicholas L. Smith  
*Genetic Epidemiology* (2013-07) <https://doi.org/f42gwd>  
DOI: [10.1002/gepi.21731](https://doi.org/10.1002/gepi.21731) · PMID: [23650146](https://pubmed.ncbi.nlm.nih.gov/23650146/) · PMCID: [PMC3990406](https://pubmed.ncbi.nlm.nih.gov/PMC3990406/)

**29. Meta-analysis of 65,734 Individuals Identifies TSPAN15 and SLC44A2 as Two Susceptibility Loci for Venous Thromboembolism**

Marine Germain, Daniel I. Chasman, Hugoline de Haan, Weihong Tang, Sara Lindström, Lu-Chen Weng, Mariza de Andrade, Marieke C.H. de Visser, Kerri L. Wiggins, Pierre Suchon, ... Pierre-Emmanuel Morange  
*The American Journal of Human Genetics* (2015-04) <https://doi.org/f3phn3>  
DOI: [10.1016/j.ajhg.2015.01.019](https://doi.org/10.1016/j.ajhg.2015.01.019) · PMID: [25772935](https://pubmed.ncbi.nlm.nih.gov/25772935/) · PMCID: [PMC4385184](https://pubmed.ncbi.nlm.nih.gov/PMC4385184/)

**30. Genetic Analysis of Venous Thromboembolism in UK Biobank Identifies the ZFPM2 Locus and Implicates Obesity as a Causal Risk Factor**

Derek Klarin, Connor A. Emdin, Pradeep Natarajan, Mark F. Conrad, Sekar Kathiresan  
*Circulation: Cardiovascular Genetics* (2017-04) <https://doi.org/gg8q98>  
DOI: [10.1161/circgenetics.116.001643](https://doi.org/10.1161/circgenetics.116.001643) · PMID: [28373160](https://pubmed.ncbi.nlm.nih.gov/28373160/) · PMCID: [PMC5395047](https://pubmed.ncbi.nlm.nih.gov/PMC5395047/)

**31. Genomic and transcriptomic association studies identify 16 novel susceptibility loci for venous thromboembolism**

Sara Lindström, Lu Wang, Erin N. Smith, William Gordon, Astrid van Hylckama Vlieg, Mariza

de Andrade, Jennifer A. Brody, Jack W. Pattee, Jeffrey Haessler, Ben M. Brumpton, ... The CHARGE Hemostasis Working Group  
*Blood* (2019-11-07) <https://doi.org/ggmxcx>  
DOI: [10.1182/blood.2019000435](https://doi.org/10.1182/blood.2019000435) · PMID: [31420334](https://pubmed.ncbi.nlm.nih.gov/31420334/) · PMCID: [PMC6871304](https://pubmed.ncbi.nlm.nih.gov/PMC6871304/)

**32. Genome-wide association analysis of venous thromboembolism identifies new risk loci and genetic overlap with arterial vascular disease**

Derek Klarin, Emma Busenkell, Renae Judy, Julie Lynch, Michael Levin, Jeffery Haessler, Krishna Aragam, Mark Chaffin, Mary Haas, Sara Lindström, ... Veterans Affairs' Million Veteran Program  
*Nature Genetics* (2019-11-01) <https://doi.org/ggcn7d>  
DOI: [10.1038/s41588-019-0519-3](https://doi.org/10.1038/s41588-019-0519-3) · PMID: [31676865](https://pubmed.ncbi.nlm.nih.gov/31676865/) · PMCID: [PMC6858581](https://pubmed.ncbi.nlm.nih.gov/PMC6858581/)

**33. Non-O Blood Type Is the Commonest Genetic Risk Factor for VTE: Results from a Meta-Analysis of the Literature**

Francesco Dentali, Anna Sironi, Walter Ageno, Sara Turato, Carlo Bonfanti, Francesco Frattini, Silvia Crestani, Massimo Franchini  
*Seminars in Thrombosis and Hemostasis* (2012-06-27) <https://doi.org/f33vdg>  
DOI: [10.1055/s-0032-1315758](https://doi.org/10.1055/s-0032-1315758) · PMID: [22740183](https://pubmed.ncbi.nlm.nih.gov/22740183/)

**34. Anticoagulant treatment is associated with decreased mortality in severe coronavirus disease 2019 patients with coagulopathy**

Ning Tang, Huan Bai, Xing Chen, Jiale Gong, Dengju Li, Ziyong Sun  
*Journal of Thrombosis and Haemostasis* (2020-04-27) <https://doi.org/ggqsrj>  
DOI: [10.1111/jth.14817](https://doi.org/10.1111/jth.14817) · PMID: [32220112](https://pubmed.ncbi.nlm.nih.gov/32220112/)

**35. High incidence of venous thromboembolic events in anticoagulated severe COVID-19 patients**

Jean-François Llitjos, Maxime Leclerc, Camille Chochois, Jean-Michel Monsallier, Michel Ramakers, Malika Auvray, Karim Merouani  
*Journal of Thrombosis and Haemostasis* (2020-05-27) <https://doi.org/ggtsjp>  
DOI: [10.1111/jth.14869](https://doi.org/10.1111/jth.14869) · PMID: [32320517](https://pubmed.ncbi.nlm.nih.gov/32320517/) · PMCID: [PMC7264774](https://pubmed.ncbi.nlm.nih.gov/PMC7264774/)

**36. Incidence of venous thromboembolism in hospitalized patients with COVID-19**

Saskia Middeldorp, Michiel Coppens, Thijs F. Haaps, Merijn Foppen, Alexander P. Vlaar, Marcella C. A. Müller, Catherine C. S. Bouman, Ludo F. M. Beenen, Ruud S. Kootte, Jarom Heijmans, ... Nick Es  
*Journal of Thrombosis and Haemostasis* (2020-07-27) <https://doi.org/ggv2vb>  
DOI: [10.1111/jth.14888](https://doi.org/10.1111/jth.14888) · PMID: [32369666](https://pubmed.ncbi.nlm.nih.gov/32369666/)

**37. Venous and arterial thromboembolic complications in COVID-19 patients admitted to an academic hospital in Milan, Italy**

Corrado Lodigiani, Giacomo Iapichino, Luca Carenzo, Maurizio Cecconi, Paola Ferrazzi, Tim Sebastian, Nils Kucher, Jan-Dirk Studt, Clara Sacco, Bertuzzi Alexia, ... Stefano Barco  
*Thrombosis Research* (2020-07) <https://doi.org/ggvvcft>  
DOI: [10.1016/j.thromres.2020.04.024](https://doi.org/10.1016/j.thromres.2020.04.024) · PMID: [32353746](https://pubmed.ncbi.nlm.nih.gov/32353746/) · PMCID: [PMC7177070](https://pubmed.ncbi.nlm.nih.gov/PMC7177070/)

**38. Coagulation abnormalities and thrombosis in patients with COVID-19**

Marcel Levi, Jecko Thachil, Toshiaki Iba, Jerrold H Levy

*The Lancet Haematology* (2020-06) <https://doi.org/ggx259>

DOI: [10.1016/s2352-3026\(20\)30145-9](https://doi.org/10.1016/s2352-3026(20)30145-9) · PMID: [32407672](https://pubmed.ncbi.nlm.nih.gov/32407672/) · PMCID: [PMC7213964](https://pubmed.ncbi.nlm.nih.gov/PMC7213964/)

**39. COVID-19-Related Severe Hypercoagulability in Patients Admitted to Intensive Care Unit for Acute Respiratory Failure**

Luca Spiezia, Annalisa Boscolo, Francesco Poletto, Lorenzo Cerruti, Ivo Tiberio, Elena Campello, Paolo Navalesi, Paolo Simioni

*Thrombosis and Haemostasis* (2020-04-21) <https://doi.org/ggx3vp>

DOI: [10.1055/s-0040-1710018](https://doi.org/10.1055/s-0040-1710018) · PMID: [32316063](https://pubmed.ncbi.nlm.nih.gov/32316063/) · PMCID: [PMC7295272](https://pubmed.ncbi.nlm.nih.gov/PMC7295272/)

**40. Autopsy Findings and Venous Thromboembolism in Patients With COVID-19**

Dominic Wichmann, Jan-Peter Sperhake, Marc Lütgehetmann, Stefan Steurer, Carolin Edler, Axel Heinemann, Fabian Heinrich, Herbert Mushumba, Inga Kniep, Ann Sophie Schröder, ... Stefan Kluge

*Annals of Internal Medicine* (2020-08-18) <https://doi.org/ggv2pm>

DOI: [10.7326/m20-2003](https://doi.org/10.7326/m20-2003) · PMID: [32374815](https://pubmed.ncbi.nlm.nih.gov/32374815/) · PMCID: [PMC7240772](https://pubmed.ncbi.nlm.nih.gov/PMC7240772/)

**41. The need to manage the risk of thromboembolism in COVID-19 patients**

Inayat Hussain Khan, Sugeevan Savarimuthu, Marco Shiu Tsun Leung, Amer Harky

*Journal of Vascular Surgery* (2020-09) <https://doi.org/ggwqwz>

DOI: [10.1016/j.jvs.2020.05.015](https://doi.org/10.1016/j.jvs.2020.05.015) · PMID: [32417304](https://pubmed.ncbi.nlm.nih.gov/32417304/) · PMCID: [PMC7224653](https://pubmed.ncbi.nlm.nih.gov/PMC7224653/)

**42. ABO Blood Group and Susceptibility to Severe Acute Respiratory Syndrome**

JAMA

(2005-03-23) <https://doi.org/ftkw6v>

DOI: [10.1001/jama.293.12.1450-c](https://doi.org/10.1001/jama.293.12.1450-c) · PMID: [15784866](https://pubmed.ncbi.nlm.nih.gov/15784866/)

**43. ABO Blood Group Phenotypes and Plasmodium falciparum Malaria: Unlocking a Pivotal Mechanism**

María-Paz Loscertales, Stephen Owens, James O'Donnell, James Bunn, Xavier Bosch-Capblanch, Bernard J. Brabin

*Advances in Parasitology* (2007) <https://doi.org/db42m2>

DOI: [10.1016/s0065-308x\(07\)65001-5](https://doi.org/10.1016/s0065-308x(07)65001-5)

**44. Attachment of Helicobacter pylori to human gastric epithelium mediated by blood group antigens**

T Boren, P Falk, K. Roth, G Larson, S Normark

*Science* (1993-12-17) <https://doi.org/d3wbh6>

DOI: [10.1126/science.8018146](https://doi.org/10.1126/science.8018146) · PMID: [8018146](https://pubmed.ncbi.nlm.nih.gov/8018146/)

**45. Human susceptibility and resistance to Norwalk virus infection**

Lisa Lindesmith, Christine Moe, Severine Marionneau, Nathalie Ruvoen, Xi Jiang, Lauren Lindblad, Paul Stewart, Jacques LePendou, Ralph Baric



*Nature Medicine* (2003-04-14) <https://doi.org/c7xvwh>  
DOI: [10.1038/nm860](https://doi.org/10.1038/nm860) · PMID: [12692541](https://pubmed.ncbi.nlm.nih.gov/12692541/)

**46. ABO blood group, hepatitis B viral infection and risk of pancreatic cancer**  
De-Shen Wang, Dong-Liang Chen, Chao Ren, Zhi-Qiang Wang, Miao-Zhen Qiu, Hui-Yan Luo, Dong-Sheng Zhang, Feng-Hua Wang, Yu-Hong Li, Rui-Hua Xu  
*International Journal of Cancer* (2012-07-15) <https://doi.org/cpfxbm>  
DOI: [10.1002/ijc.26376](https://doi.org/10.1002/ijc.26376) · PMID: [21858814](https://pubmed.ncbi.nlm.nih.gov/21858814/)

**47. Relation of Infection with Neisseria gonorrhoeae to ABO Blood Groups**  
M. T. Foster, A. H. Labrum  
*Journal of Infectious Diseases* (1976-02-01) <https://doi.org/dt9x9d>  
DOI: [10.1093/infdis/133.3.329](https://doi.org/10.1093/infdis/133.3.329) · PMID: [1254989](https://pubmed.ncbi.nlm.nih.gov/1254989/)

**48. The relationship between blood groups and disease**  
David. J. Anstee  
*Blood* (2010-06-10) <https://doi.org/cks8q2>  
DOI: [10.1182/blood-2010-01-261859](https://doi.org/10.1182/blood-2010-01-261859) · PMID: [20308598](https://pubmed.ncbi.nlm.nih.gov/20308598/)

**49. Serological weak D phenotypes: a review and guidance for interpreting the RhD blood type using the RHD genotype**  
S. Gerald Sandler, Leonard N. Chen, Willy A. Flegel  
*British Journal of Haematology* (2017-10) <https://doi.org/f964n6>  
DOI: [10.1111/bjh.14757](https://doi.org/10.1111/bjh.14757) · PMID: [28508413](https://pubmed.ncbi.nlm.nih.gov/28508413/) · PMCID: [PMC5612847](https://pubmed.ncbi.nlm.nih.gov/PMC5612847/)

**50. Influence of latent Toxoplasma infection on human personality, physiology and morphology: pros and cons of the Toxoplasma-human model in studying the manipulation hypothesis**  
J. Flegr  
*Journal of Experimental Biology* (2012-12-05) <https://doi.org/f4hh67>  
DOI: [10.1242/jeb.073635](https://doi.org/10.1242/jeb.073635) · PMID: [23225875](https://pubmed.ncbi.nlm.nih.gov/23225875/)

**51. Population Structure and Epidemiology of Toxoplasma gondii**  
M. L. Dardé, D. Ajzenberg, J. Smith  
*Elsevier* (2007) <https://doi.org/fs2wxxp>  
DOI: [10.1016/b978-012369542-0/50005-2](https://doi.org/10.1016/b978-012369542-0/50005-2)

**52. COVID-19: Data Main - NYC Health**  
<https://www1.nyc.gov/site/doh/covid/covid-19-data.page>

**53. ABO and Rh(D) phenotype frequencies of different racial/ ethnic groups in the United States**  
George Garratty, Simone A. Glynn, Robin McEntire, Retrovirus Epidemiology Donor Study  
*Transfusion* (2004-05) <https://doi.org/dksh5r>  
DOI: [10.1111/j.1537-2995.2004.03338.x](https://doi.org/10.1111/j.1537-2995.2004.03338.x) · PMID: [15104651](https://pubmed.ncbi.nlm.nih.gov/15104651/)

**54. Absolute risk reductions and numbers needed to treat can be obtained from adjusted survival models for time-to-event outcomes**

Peter C. Austin

*Journal of Clinical Epidemiology* (2010-01) <https://doi.org/dgj9pv>

DOI: [10.1016/j.jclinepi.2009.03.012](https://doi.org/10.1016/j.jclinepi.2009.03.012) · PMID: [19595575](https://pubmed.ncbi.nlm.nih.gov/19595575/)

**55. False-negative of RT-PCR and prolonged nucleic acid conversion in COVID-19: Rather than recurrence**

Ai Tang Xiao, Yi Xin Tong, Sheng Zhang

*Journal of Medical Virology* (2020-04-09) <https://doi.org/ggx3gt>

DOI: [10.1002/jmv.25855](https://doi.org/10.1002/jmv.25855) · PMID: [32270882](https://pubmed.ncbi.nlm.nih.gov/32270882/) · PMCID: [PMC7262304](https://pubmed.ncbi.nlm.nih.gov/PMC7262304/)

**56. COVID-19 Testing**

Colin P. West, Victor M. Montori, Priya Sampathkumar

*Mayo Clinic Proceedings* (2020-06) <https://doi.org/ggr6q6>

DOI: [10.1016/j.mayocp.2020.04.004](https://doi.org/10.1016/j.mayocp.2020.04.004) · PMID: [32376102](https://pubmed.ncbi.nlm.nih.gov/32376102/) · PMCID: [PMC7151274](https://pubmed.ncbi.nlm.nih.gov/PMC7151274/)

**57. Negative Nasopharyngeal and Oropharyngeal Swab Does Not Rule Out COVID-19**

Poramed Winichakoon, Romane Chaiwarith, Chalerm Liwsrisakun, Parichat Salee, Aree

Goonna, Atikun Limsukon, Quanhathai Kaewpoowat

*Journal of Clinical Microbiology* (2020-02-26) <https://doi.org/ggpw9m>

DOI: [10.1128/jcm.00297-20](https://doi.org/10.1128/jcm.00297-20) · PMID: [32102856](https://pubmed.ncbi.nlm.nih.gov/32102856/) · PMCID: [PMC7180262](https://pubmed.ncbi.nlm.nih.gov/PMC7180262/)

**58. A Proportional Hazards Model for the Subdistribution of a Competing Risk**

Jason P. Fine, Robert J. Gray

*Journal of the American Statistical Association* (1999-06) <https://doi.org/gdtmsf>

DOI: [10.1080/01621459.1999.10474144](https://doi.org/10.1080/01621459.1999.10474144)

**59. Coronavirus Disease 2019 (COVID-19)**

CDC

*Centers for Disease Control and Prevention* (2020-02-11)

<https://www.cdc.gov/coronavirus/2019-ncov/hcp/return-to-work.html>

**60. Coronavirus Disease 2019 (COVID-19)**

CDC

*Centers for Disease Control and Prevention* (2020-02-11)

<https://www.cdc.gov/coronavirus/2019-ncov/hcp/duration-isolation.html>

**61. Estimation of the asymptomatic ratio of novel coronavirus infections (COVID-19)**

Hiroshi Nishiura, Tetsuro Kobayashi, Ayako Suzuki, Sung-Mok Jung, Katsuma Hayashi, Ryo

Kinoshita, Yichi Yang, Baoyin Yuan, Andrei R. Akhmetzhanov, Natalie M. Linton, Takeshi

Miyama

*International Journal of Infectious Diseases* (2020-03) <https://doi.org/ggp6hp>

DOI: [10.1016/j.ijid.2020.03.020](https://doi.org/10.1016/j.ijid.2020.03.020) · PMID: [32179137](https://pubmed.ncbi.nlm.nih.gov/32179137/) · PMCID: [PMC7270890](https://pubmed.ncbi.nlm.nih.gov/PMC7270890/)

**62. Temporal dynamics in viral shedding and transmissibility of COVID-19**

Xi He, Eric H. Y. Lau, Peng Wu, Xilong Deng, Jian Wang, Xinxin Hao, Yiu Chung Lau, Jessica

Y. Wong, Yujuan Guan, Xinghua Tan, ... Gabriel M. Leung  
*Nature Medicine* (2020-04-15) <https://doi.org/ggr99q>  
DOI: [10.1038/s41591-020-0869-5](https://doi.org/10.1038/s41591-020-0869-5) · PMID: [32296168](https://pubmed.ncbi.nlm.nih.gov/32296168/)

**63. Comparison of Clinical Characteristics of Patients with Asymptomatic vs Symptomatic Coronavirus Disease 2019 in Wuhan, China**

Rongrong Yang, Xien Gui, Yong Xiong  
*JAMA Network Open* (2020-05-27) <https://doi.org/ggx2nn>  
DOI: [10.1001/jamanetworkopen.2020.10182](https://doi.org/10.1001/jamanetworkopen.2020.10182) · PMID: [32459353](https://pubmed.ncbi.nlm.nih.gov/32459353/) · PMCID: [PMC7254178](https://pubmed.ncbi.nlm.nih.gov/PMC7254178/)

**64. Clinical characteristics of asymptomatic and symptomatic patients with mild COVID-19**

G.-u. Kim, M.-J. Kim, S. H. Ra, J. Lee, S. Bae, J. Jung, S.-H. Kim  
*Clinical Microbiology and Infection* (2020-07) <https://doi.org/ggv3bh>  
DOI: [10.1016/j.cmi.2020.04.040](https://doi.org/10.1016/j.cmi.2020.04.040) · PMID: [32360780](https://pubmed.ncbi.nlm.nih.gov/32360780/) · PMCID: [PMC7252018](https://pubmed.ncbi.nlm.nih.gov/PMC7252018/)

**65. Variation in False-Negative Rate of Reverse Transcriptase Polymerase Chain Reaction–Based SARS-CoV-2 Tests by Time Since Exposure**

Lauren M. Kucirka, Stephen A. Lauer, Oliver Laeyendecker, Denali Boon, Justin Lessler  
*Annals of Internal Medicine* (2020-08-18) <https://doi.org/ggwq83>  
DOI: [10.7326/m20-1495](https://doi.org/10.7326/m20-1495) · PMID: [32422057](https://pubmed.ncbi.nlm.nih.gov/32422057/) · PMCID: [PMC7240870](https://pubmed.ncbi.nlm.nih.gov/PMC7240870/)

**66. Sequence variation at the human ABO locus**

S. P. YIP  
*Annals of Human Genetics* (2002-01) <https://doi.org/bpsx99>  
DOI: [10.1017/s0003480001008995](https://doi.org/10.1017/s0003480001008995) · PMID: [12014997](https://pubmed.ncbi.nlm.nih.gov/12014997/)

**67. A Class of  $\$K\$$ -Sample Tests for Comparing the Cumulative Incidence of a Competing Risk**

Robert J. Gray  
*The Annals of Statistics* (1988-09) <https://doi.org/dhv2kf>  
DOI: [10.1214/aos/1176350951](https://doi.org/10.1214/aos/1176350951)

**68. Open collaborative writing with Manubot**

Daniel S. Himmelstein, Vincent Rubinetti, David R. Slochower, Dongbo Hu, Venkat S. Malladi, Casey S. Greene, Anthony Gitter  
*PLOS Computational Biology* (2019-06-24) <https://doi.org/c7np>  
DOI: [10.1371/journal.pcbi.1007128](https://doi.org/10.1371/journal.pcbi.1007128) · PMID: [31233491](https://pubmed.ncbi.nlm.nih.gov/31233491/) · PMCID: [PMC6611653](https://pubmed.ncbi.nlm.nih.gov/PMC6611653/)